

# SUNY'S Impact on New York's Congressional District 18

Prepared for  
Representative  
Nita Lowey

# 2009

District  
**18**

Purchase College is listed as one of The Best 366 Colleges by the *Princeton Review*. Purchase College uniquely combines on one campus internationally renowned conservatory arts programs with an excellent liberal arts and sciences program. Professional conservatory training programs are offered in Theater Arts & Film, Music, Dance, and Art & Design. Accomplished faculty offer challenging liberal arts and sciences studies in humanities, social sciences and natural sciences. Our distinguished alumni include: John Ambroseo '83, President and CEO of Coherent, Inc.; Dr. Jill Bargonetti-Chavarria '85, geneticist, Hunter College, CUNY; Terese Capucilli '78, Artistic Director and Principal Dancer, Martha Graham Dance Company; actor and comedian Susie Essman '77, *Curb Your Enthusiasm*; actor Edie Falco '86, *The Sopranos*; anthropologist David Graeber '84, University of London; filmmaker Hal Hartley '84; actor Melissa Leo '82, *Homicide: Life on the Street*, *Frozen River*; actor Parker Posey '91, *Waiting for Guffman*, *Best in Show*, *A Mighty Wind*; Carl Safina '77, environmental scientist and MacArthur "genius" fellow; actor Wesley Snipes '85, *White Men Can't Jump*, *U.S. Marshalls*, *Blade*; actor Stanley Tucci '82, *Big Night*, *The Terminal*, *The Devil Wears Prada*; photographer and filmmaker Harvey Wang '77; Chris Wedge '84, producer of the animated films *Robots* and *Ice Age*.

Purchase, with 4,000 students, has a strong commitment to increasing access to higher education for underrepresented students with major programs supported by the National Institutes for Health, the National Science Foundation, and the PepsiCo Foundation.

Purchase College is the 14th largest employer in Westchester County and is a regional cultural resource for Westchester County and the surrounding communities. Its Neuberger Museum of Art serves over 46,000 visitors each year, including almost 10,000 primary and secondary school students. Its Performing Arts Center, the major professional, non-profit arts presenter in the region, reaches 150,000 people each year.

Westchester Community College (WCC) was founded as part of SUNY in 1946. The college is sponsored locally by the County of Westchester. It is the only two-year public institution in the county serving a population of almost one million people. During more than 60 years of service, the college has established its reputation for providing quality education at low cost for students and the community through extraordinary institutional stability on the one hand and unwavering commitment to innovation and change on the other. The college is serving a student population of more than 12,000 credit students in 37 degree programs and 17 certificate programs. It also serves another 13,000 students in a host of non-credit courses.

As the largest institution of higher education in the county, Westchester Community College boasts one of the largest Continuing Education units in the entire SUNY system. Students take credit and non-credit courses on the main campus in Valhalla, at extension centers in Peekskill, Ossining, White Plains, Yonkers, and Mount Vernon, and at various other locations throughout the county. Approximately 4,000 students are enrolled in English as a Second Language classes here. Thousands of county residents thrill to the college's extensive cultural arts programs which include poetry and fiction readings, dance events, dramatic performances, and concerts.

## District Impact Summary

### Human Impact

**Students: 19,648**

**Employees: 2,130**

**Alumni: 88,106**

**Degrees Since Inception: 104,175**

### Economic Impact

**Total All Funds Expenditures: \$239.9 million**

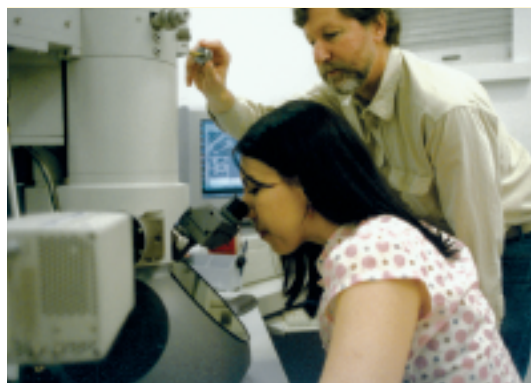
**Payroll: \$108.5 million**

**Capital Construction: \$13.1 million**

**Research and Grant Activity: \$4.9 million**

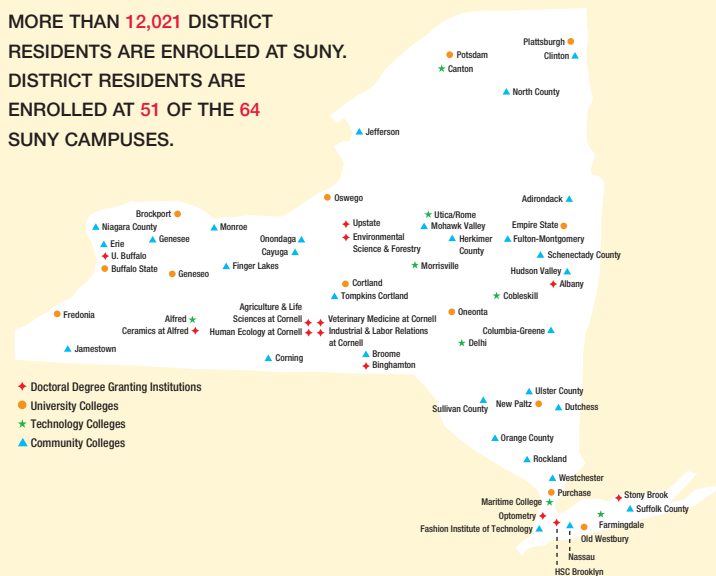
(Source: Research Foundation, SUNY, FY 2007-2008)

Unless otherwise noted, data is based on information from the State University of New York Office of Institutional Research and Analysis for academic year 2007-2008



Purchase College

MORE THAN 12,021 DISTRICT RESIDENTS ARE ENROLLED AT SUNY. DISTRICT RESIDENTS ARE ENROLLED AT 51 OF THE 64 SUNY CAMPUSES.





## SUNY's Impact on the Mid-Hudson Region

The eight SUNY colleges located within the six counties that comprise New York's Mid-Hudson region provide key economic development resources for the area. The colleges—Purchase College, SUNY New Paltz, Dutchess Community College, Orange County Community College, Rockland Community College, Sullivan Community College, Ulster County Community College and Westchester Community College—have combined total expenditures of \$574 million per year, capital construction budgets of \$48.8 million and attract millions of dollars of research funds in the areas of design, engineering, social sciences, education, small business development, public safety, and other areas. They enroll approximately 52,010 students, employ more than 7,003 faculty and staff, and grant more than 7,000 degrees annually.

## Mid-Hudson Impact Summary

Campuses: 8  
Enrollment: 52,010  
Alumni: 236,535  
Employees: 7,003  
Degrees Since Inception: 279,673  
Total All Funds Expenditures: \$573 million  
Payroll: \$261 million  
Capital Construction: \$48.8 million  
Research and Grant Activity: \$8 million  
(Source: Research Foundation, SUNY, FY 2007-2008)

*Unless otherwise noted, data is based on information from the SUNY Office of Institutional Research and Analysis for academic year 2007-2008*

## SUNY Campuses in the Mid-Hudson Region Place High in National Rankings

- *U.S. News & World Report – America's Best Colleges 2006*
  - SUNY New Paltz placed #5 among Top 10 Public Universities – Master's (North).
- *Kiplinger's Personal Finance*
  - Purchase College placed #63 and SUNY New Paltz #90 among the Top 100 Best Values among public colleges and universities
- *Princeton Review*
  - SUNY New Paltz and Purchase College are listed among "Best Northeastern Colleges."
  - Rockland Community College's new 100,000 sq. ft. Technology Center was awarded Project of the Year from the American Society of Civil Engineers.

## Other SUNY Resources in the Mid-Hudson Region

- *Empire State College* provides undergraduate and graduate degrees through three locations in the Hudson Valley.
  - Hartsdale
  - Nanuet
  - Newburgh
- The *Purchase College Neuberger Museum of Art* is Westchester County's premier museum of modern, contemporary and African art and is among the ten largest museums in New York State. The Neuberger presents 12-16 changing exhibitions each year, with annual attendance of 62,000 people, and provides five family events, which attract 800 people per event.
- The *Purchase College Performing Arts Center* provides 650 music, dance, and theater events annually, attracting 200,000 people. Arts and education outreach programs through The Performing Arts Center reach 20,000 local school children every year.
- The *Eugene Levy Fieldhouse* at Rockland Community College is a two-acre, multi-use facility that serves as a regional center for public and commercial events, attracting 200,000 visitors per year to showcase trade shows, graduations and sporting events.